



I'M SPEAKING AT
ODTUG
Kscope19 
SEATTLE, WASHINGTON • JUNE 23-27

www.kscope19.odtug.com

SEATTLE



Washington State
Convention Center



Give a Man a Report, Inform Him for a Day. Teach a Man to Create a Dashboard, Enlighten Him for a Lifetime.

Katie High

Agenda

What We'll Cover Today

- | | | | |
|----|----------------------------------|----|----------|
| 1. | Introduction | 5. | Infolets |
| 2. | Financial Reports vs. Dashboards | 6. | Q&A |
| 3. | Dashboards in PBCS | | |
| 4. | Tips & Tricks | | |

About Katie High

- I will be celebrating my 4 year anniversary with SC&H in September!
- This is my first time in Seattle!
- I got engaged in February and will be getting married next year!



About SC&H Group

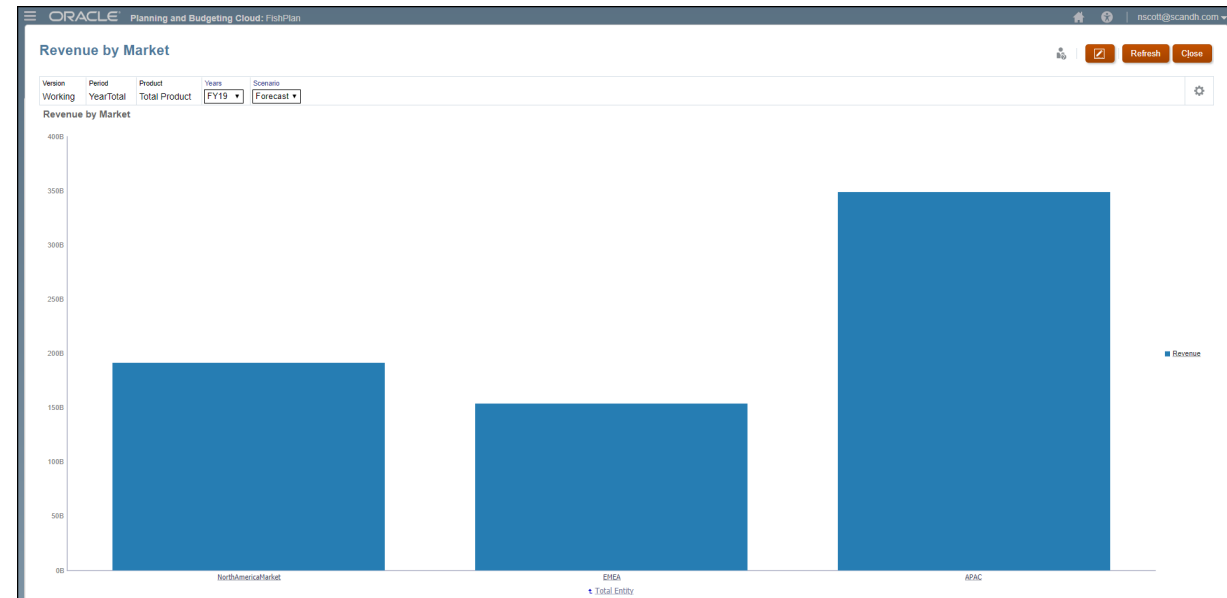
FOUNDED IN 1991	LARGEST ORACLE-HYPERION PRACTICE ON THE EAST COAST	COMMUNITY SERVICE: 25 AVERAGE HOURS PER EMPLOYEE	ONLY ORACLE PARTNER TO ACHIEVE CLOUDSELECT STATUS 2 CONSECUTIVE YEARS 2016 & 2017
200+ CLIENTS & 100% SUCCESS RATING	2018 BEST ACCOUNTING TODAY ACCOUNTING FIRMS	MOST ADMIRABLE CEO	LARGEST EPM CLOUD DEPLOYMENT IN ORACLE HISTORY
CLIENT SERVICE: { “WORLD CLASS” “3X INDUSTRY AVERAGE”		BEST PLACES TO WORK →	
		ACCOUNTING TODAY	
		BUSINESS JOURNAL	
		INSIDE ACCOUNTING	► 1ST EVER ◀ FCCS IMPLEMENTATION
		BALTIMORE SUN	
		INC. MAGAZINE 2018	
ORACLE ORACLE-HYPERION EPM SPECIALISTS & PLATINUM PARTNER SINCE 2007		SERVING 46 OF THE FORTUNE 100	

Financial Reports vs. Dashboards

Reporting in PBCS

- The reporting outputs from a PBCS application are critical for stakeholders to make informed decisions.
- PBCS reporting tools include financial reports and dashboards.
- Financial reports and dashboards each have their benefits and limitations.
- Both provide the user with data, but dashboards provide a story to allow users to make informed decisions.

	Total Product Revenue by Market												
	2019 Forecast												
	USD (in millions)												
	January	February	March	April	May	June	July	August	September	October	November	December	Year Total
North America Market	\$13,877	\$16,023	\$15,996	\$16,055	\$14,510	\$16,341	\$16,063	\$16,254	\$18,192	\$15,842	\$16,263	\$15,999	\$191,415
EMEA Market	\$11,016	\$12,794	\$12,823	\$12,841	\$11,554	\$13,039	\$13,115	\$13,273	\$14,635	\$12,845	\$12,963	\$12,921	\$153,818
APAC Market	\$26,685	\$29,524	\$29,183	\$29,056	\$26,830	\$29,287	\$29,377	\$29,401	\$31,872	\$28,692	\$28,920	\$29,320	\$348,146
Total Entity	\$51,577	\$58,341	\$58,002	\$57,952	\$52,894	\$58,666	\$58,554	\$58,928	\$64,699	\$57,380	\$58,146	\$58,240	\$693,379



Canned (Tuna) Reports

- Benefits
 - Standard template
 - East to interpret
 - Shows a record of data at a point in time
- Limitations
 - Static data set
 - Time consuming to design and develop
 - Administrative task

	Total Product Revenue by Market												
	2019 Forecast												
	USD (in millions)												
	January	February	March	April	May	June	July	August	September	October	November	December	Year Total
North America Market	\$13,877	\$16,023	\$15,996	\$16,055	\$14,510	\$16,341	\$16,063	\$16,254	\$18,192	\$15,842	\$16,263	\$15,999	\$191,415
EMEA Market	\$11,016	\$12,794	\$12,823	\$12,841	\$11,554	\$13,039	\$13,115	\$13,273	\$14,635	\$12,845	\$12,963	\$12,921	\$153,818
APAC Market	\$26,685	\$29,524	\$29,183	\$29,056	\$26,830	\$29,287	\$29,377	\$29,401	\$31,872	\$28,692	\$28,920	\$29,320	\$348,146
Total Entity	\$51,577	\$58,341	\$58,002	\$57,952	\$52,894	\$58,666	\$58,554	\$58,928	\$64,699	\$57,380	\$58,146	\$58,240	\$693,379

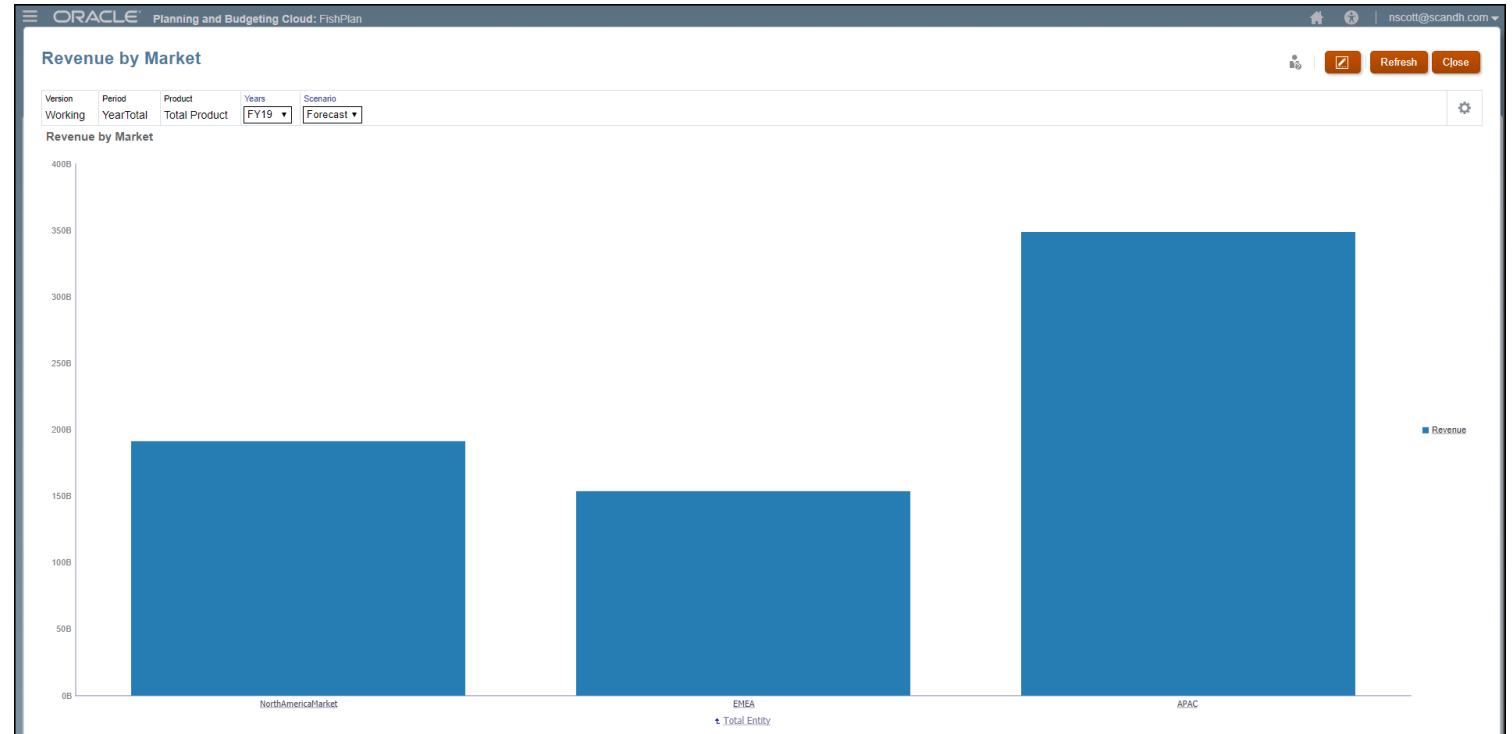
Dashboards

■ Benefits

- Customizable
- User autonomy
- Visually appealing and dynamic
- Real-time data
- Direct link compatible
- Easy to add commentary

■ Limitations

- User learning curve
- Data overload
- Smart View displays dashboards as grids



Flowers:

1. White Roses



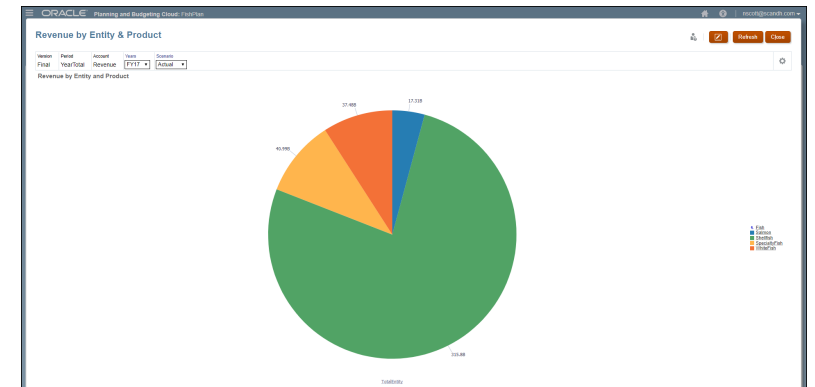
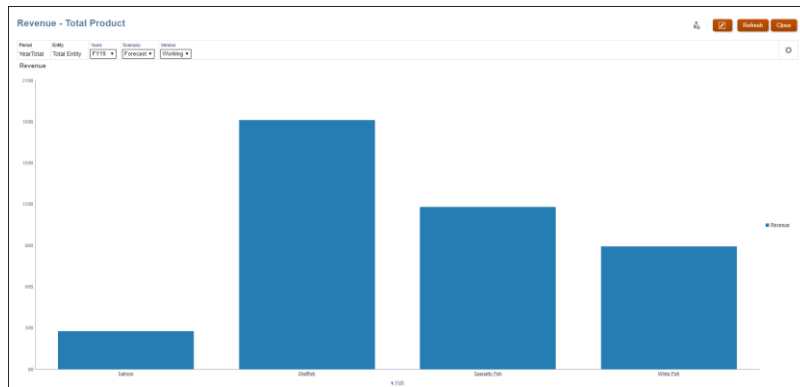
2. White Tulips



Dashboards in PBCS

Dashboard Overview

- A number of graph and chart types exist to help users make their data meaningful.
- Dashboards are more than just a graph on a screen.
- Data input web forms and business rules can be incorporated to transform a dashboard from an analytics tool to a comprehensive planning process.



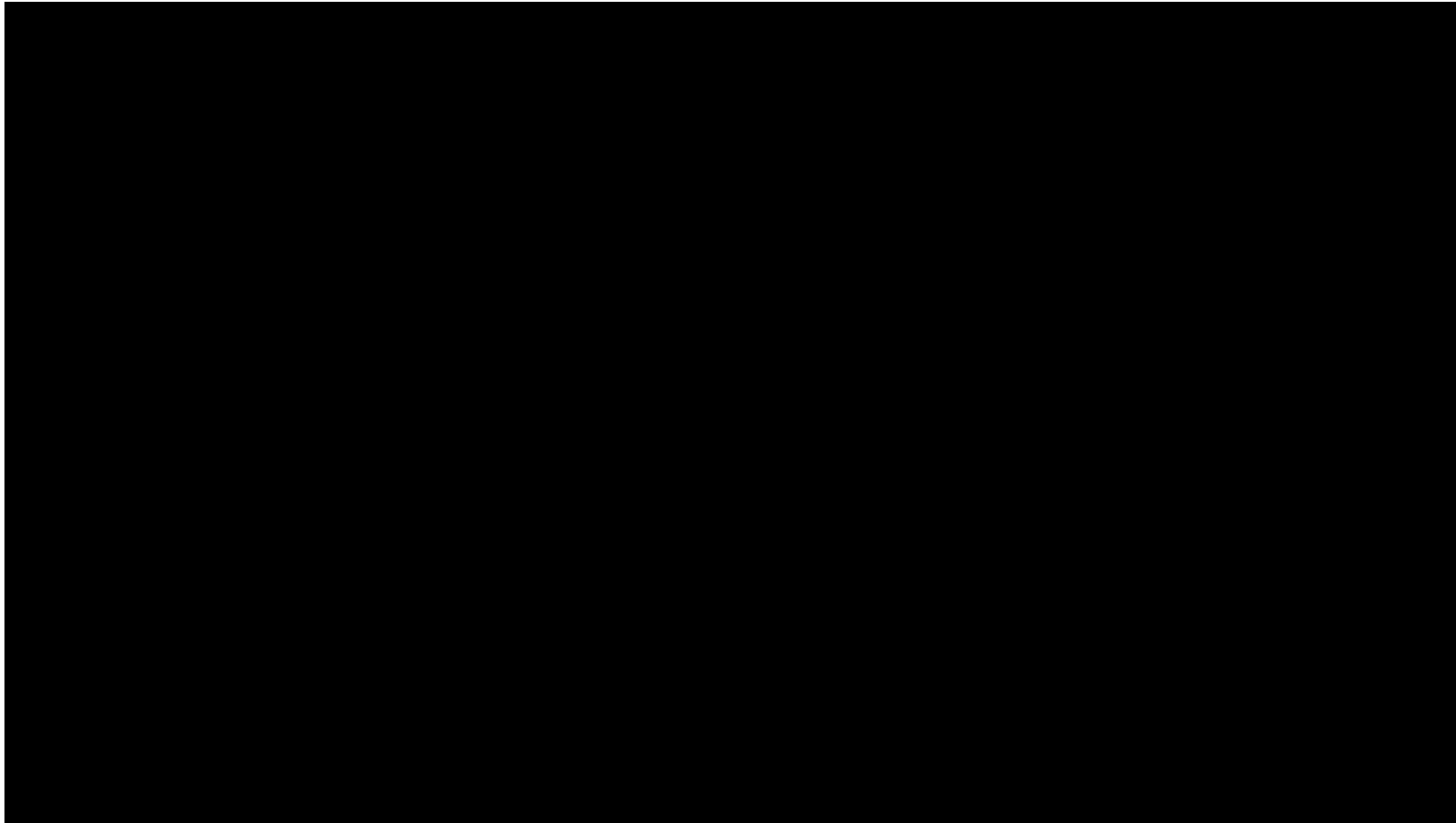
Feeling Like a Fish Out of Water

- Dashboards are designed to be an intuitive reporting tool that users of all expertise can learn and master.
- Getting started with dashboards is not exempt from the learning curve of a new functionality.



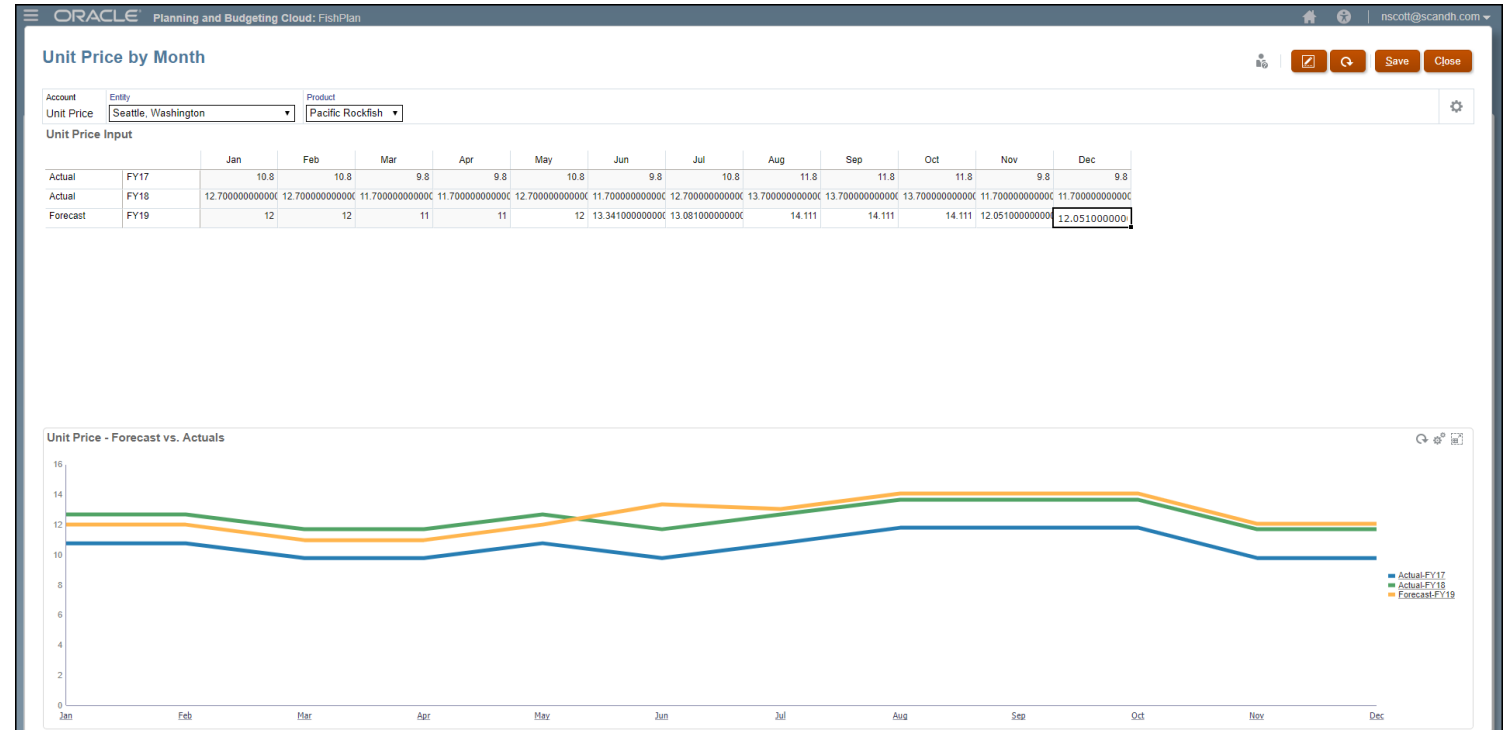
VIDEO DEMO

Creating a Dashboard



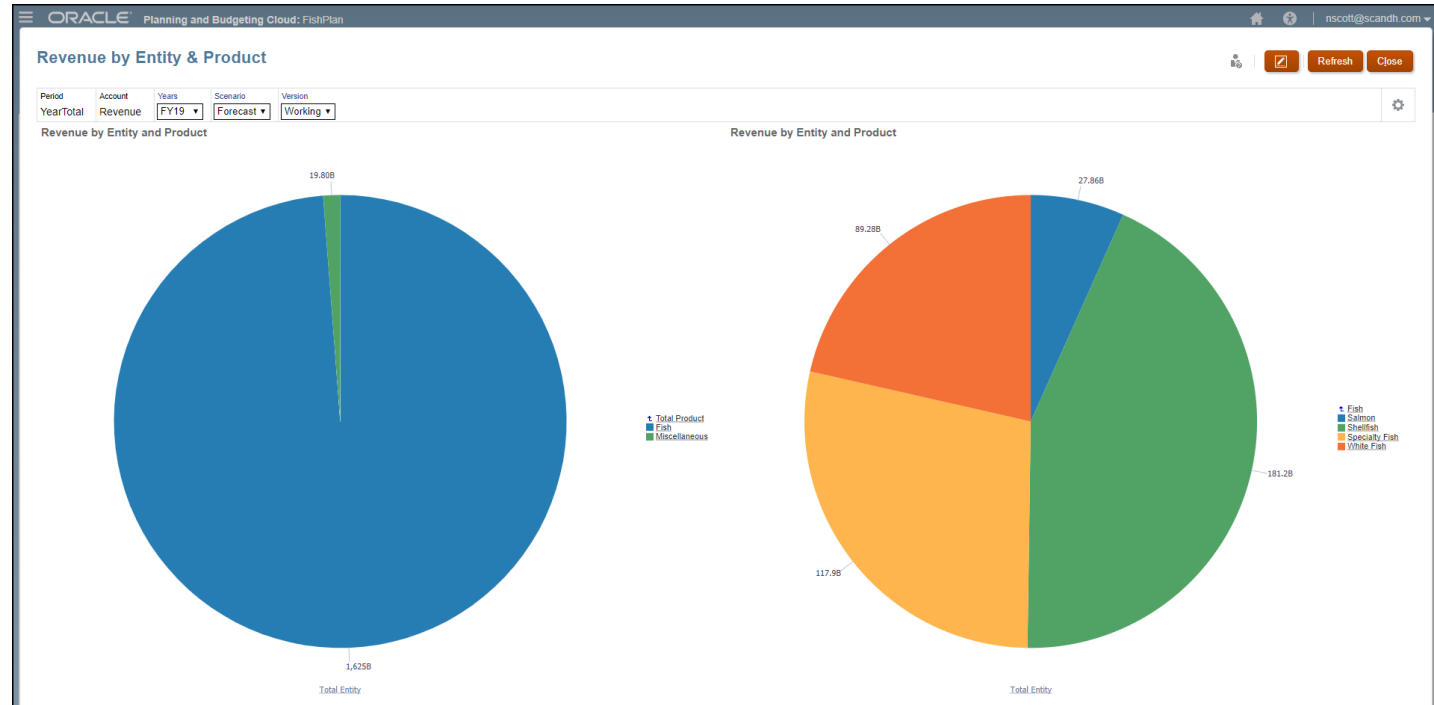
Real-Time Data Analytics

- In today's world, businesses cannot afford to be uninformed.
- Dashboards dynamically pull from an application and provide a live visual of the data.
- Data Input web forms, business rules, and graphs can all be combined to allow users to update data through the dashboard and see the effects in real-time.



Interactive Reporting

- Dashboards create a story behind the data to educate users.
- The dynamic nature of dashboards give users a chance to see data at any level.
- Users can “slice and dice” a data set to see as general, or specific as needed.

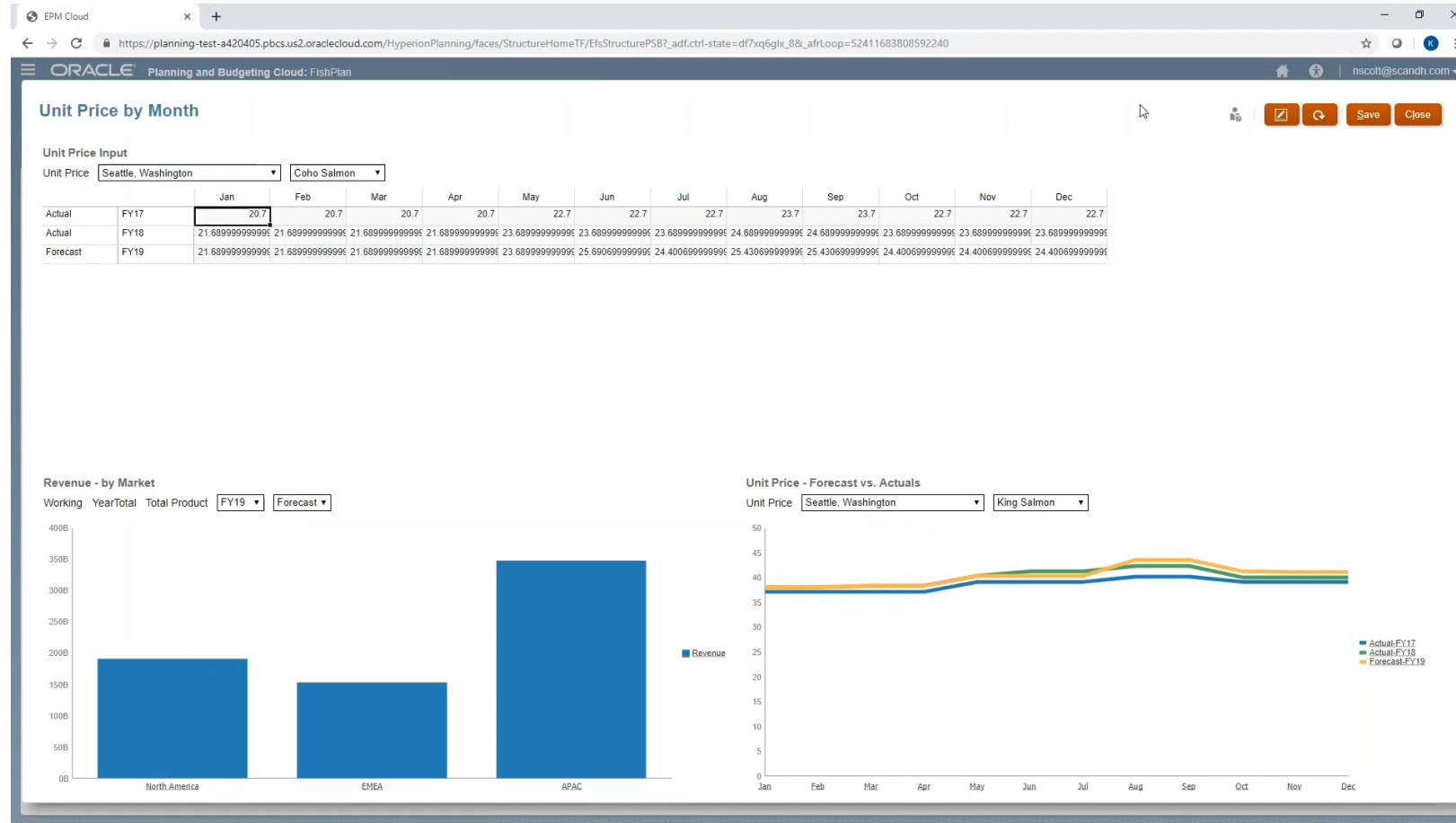


Plenty of Fish in the Sea

- The significance of data is not uniform across a user base.
- Dashboards allow users to create data visuals to meet their specific business needs.
- Better decision making is possible when users are given the chance to analyze the data in a way that makes sense for them.
- Dashboards can be as simple or intricate as the user needs.
- The visuals make the data more personal and intuitive to drive critical decisions.



Planning & Real-Time Analytics



Cake:

1. Chocolate



2. Funfetti



Tips & Tricks

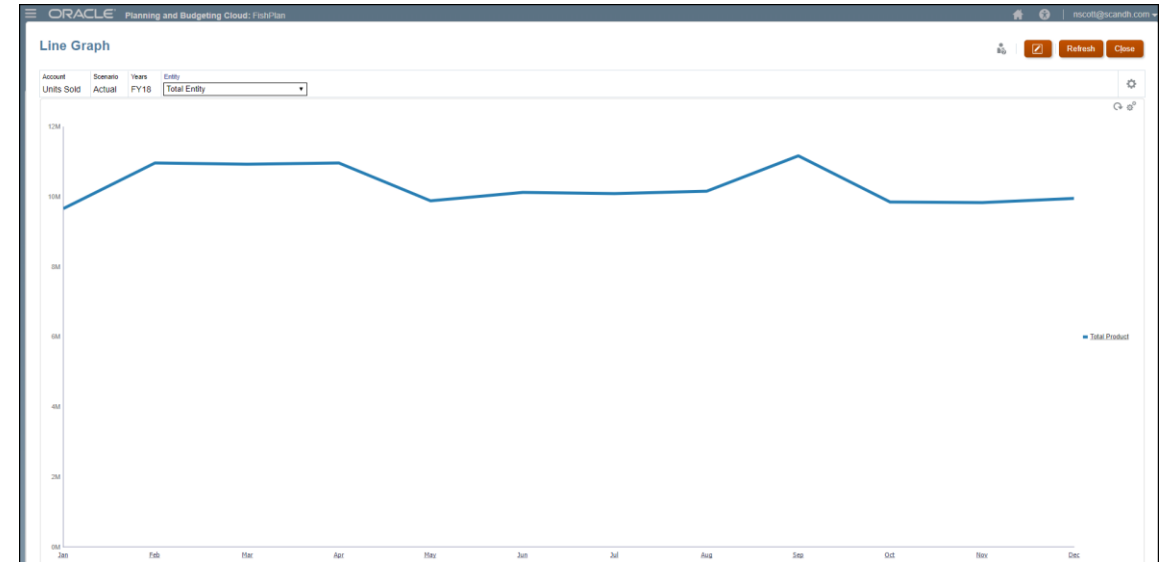
Tips & Tricks

Using the Right Bait

DASHBOARD TYPE	BEST USE
Area	Quantify change in volume of data over time.
Bar	Compare multiple data sets at once.
Bubble	Adaptation of a scatter graph to show data across 3 or more variables to create a correlation.
Column	Shows change in data over time.
Combination	Includes Bar and Line graphs to show changes in comparative data over time.
Doughnut	Variation of a pie chart that allows for information to display in the cut out center.
Funnel	Shows change in data across different phases or categories.
Gauge	Display data relative to a set range or goal.
Line	Shows change in data over time.
Pie	Depicts data as pieces of a whole.
Radar	Creates a unique access for comparing data across multiple variables.
Scatter	Used to display a correlation between two variables.
Tile	Allows users to select a specific intersection to display cell details.

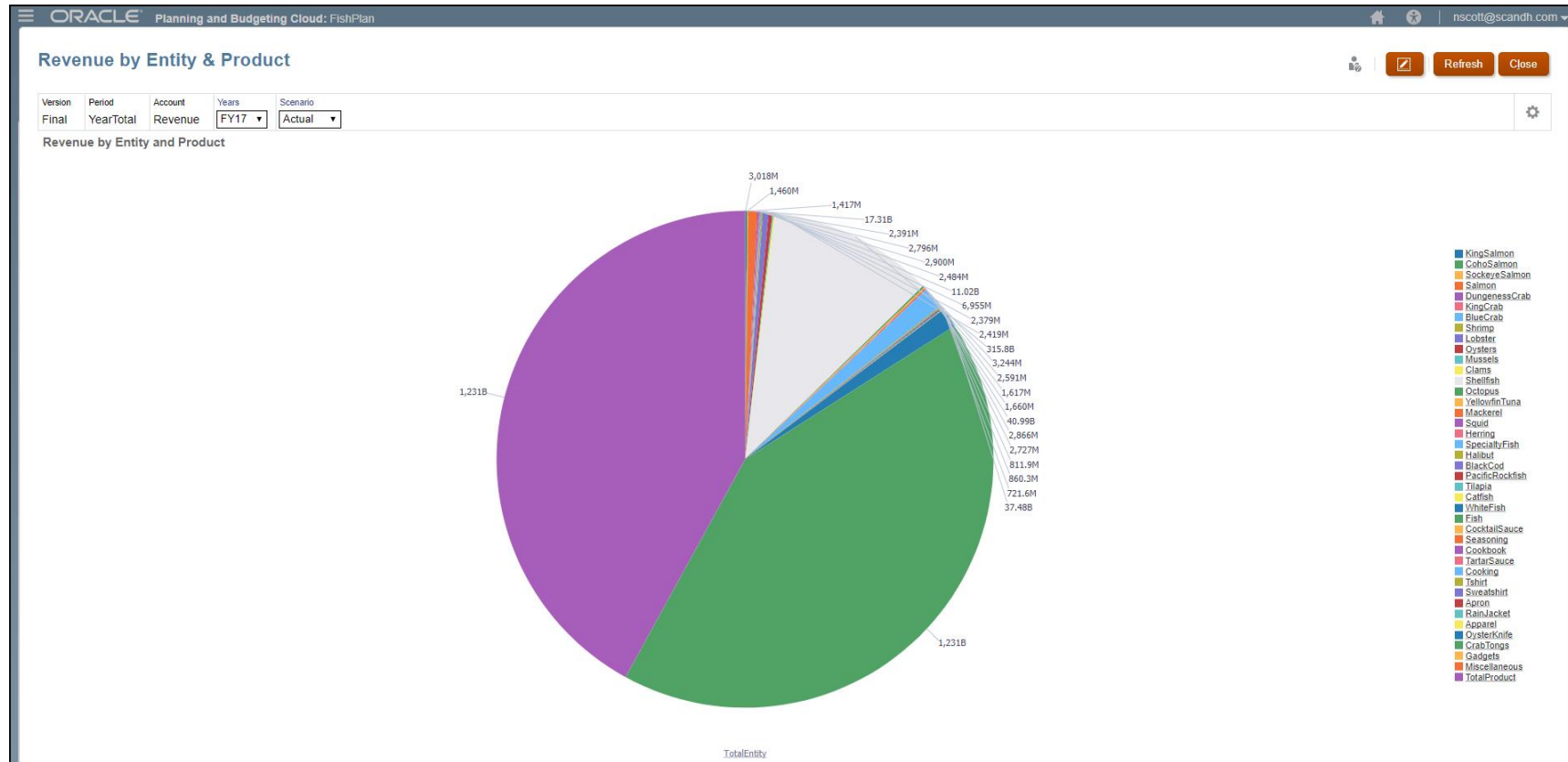
Tips & Tricks

Using the Right Bait



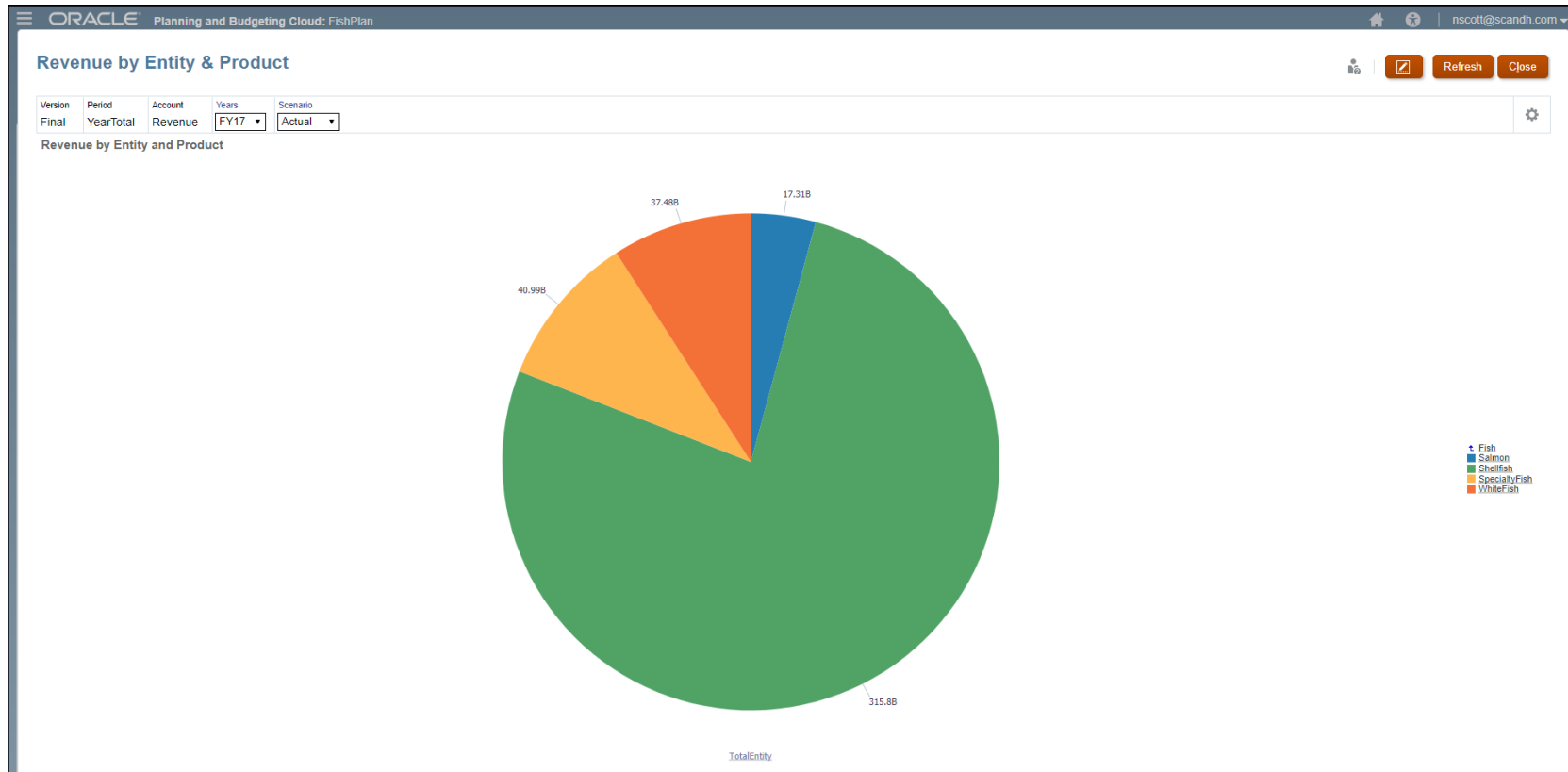
Tips & Tricks

Opening a Can of Worms



Tips & Tricks

Meaningful Visuals



Tips & Tricks

Getting Creative

- Certain limitations that exist today can be solved by getting creative with dashboards.
- A heat map graph is not an available chart type, yet users can combine other PBCS functionality to create a work around.



Tips & Tricks

Getting Creative

- Composite forms can still be created and maintained via Dashboards.

The screenshot displays the Oracle Planning and Budgeting Cloud: FishPlan interface. The 'Data Input' section is active, showing a form for 'King Salmon' in 'Seattle, Washington'. The 'Unit Price Input' table shows data for FY17, FY18, and FY19 across months Jan to Dec. The 'Units Sold Input' table shows data for FY17, FY18, and FY19 across months Jan to Dec.

Unit Price Input

		Jan	Feb	Mar	Apr	May	Jun	Jul	Aug	Sep	Oct	Nov	Dec
Actual	FY17	37.3	37.3	37.3	37.3	39.3	39.3	39.3	40.3	40.3	39.3	39.3	39.3
Actual	FY18	38.09999999999999	38.09999999999999	38.4	38.4	40.4	41.4	41.4	42.4	42.4	40.19999999999999	40.09999999999999	40.09999999999999
Forecast	FY19	38.09999999999999	38.09999999999999	38.4	38.4	40.5	51	50	43.672	43.672	41.406	41.303	41.303

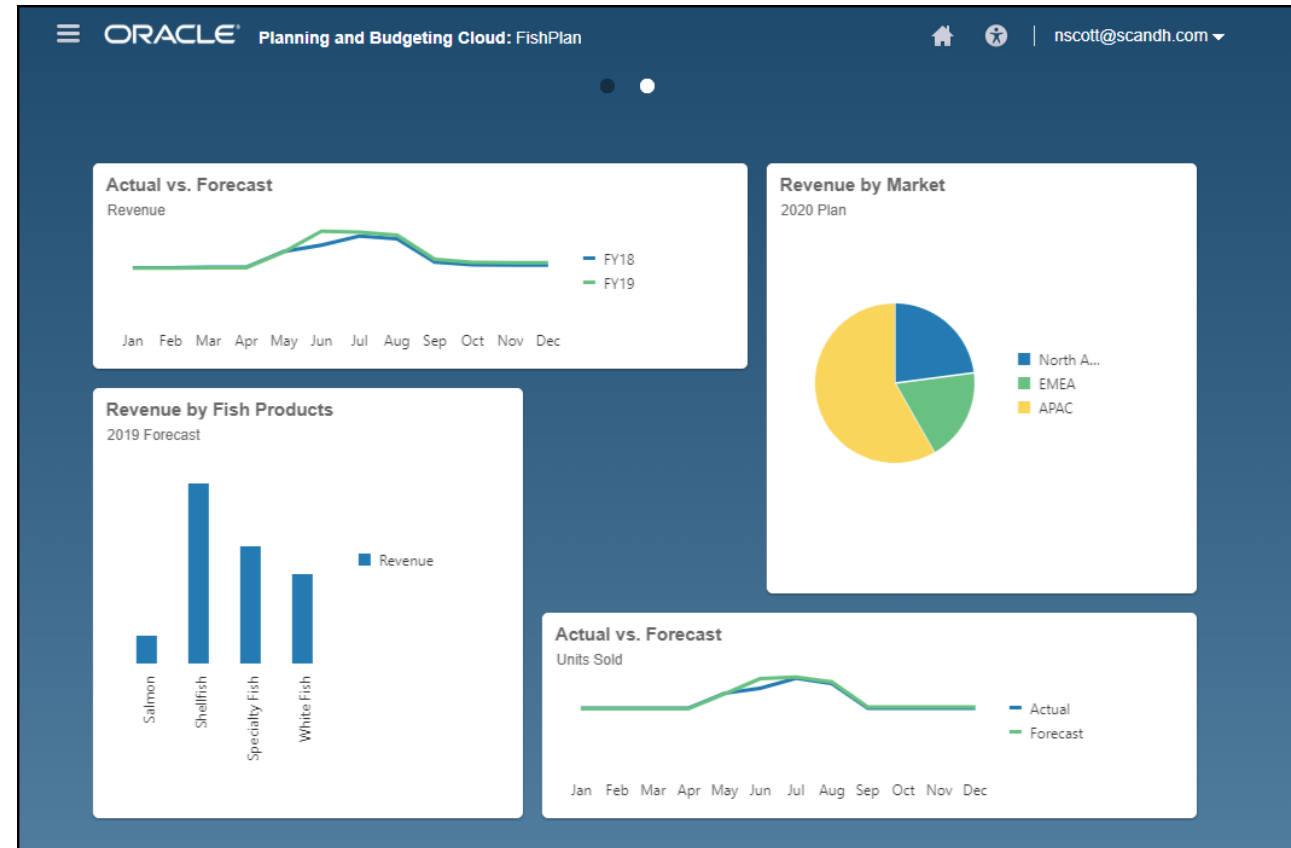
Units Sold Input

		Jan	Feb	Mar	Apr	May	Jun	Jul	Aug	Sep	Oct	Nov	Dec
Actual	FY17	6000	6000	6000	6000	7500	8000	9000	8500	6000	6000	6000	6000
Actual	FY18	6300	6300	6300	6300	7875	8400	9450	8925	6300	6300	6300	6300
Forecast	FY19	6240	6240	6240	6240	7800	9416	9594	9061	6396	6396	6396	6396

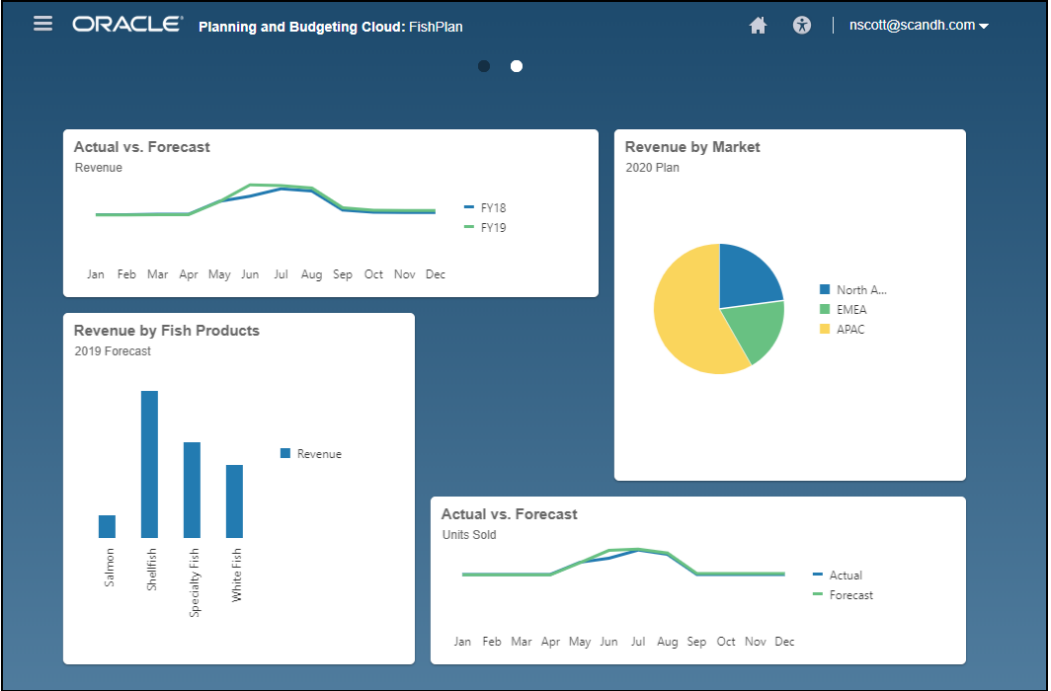
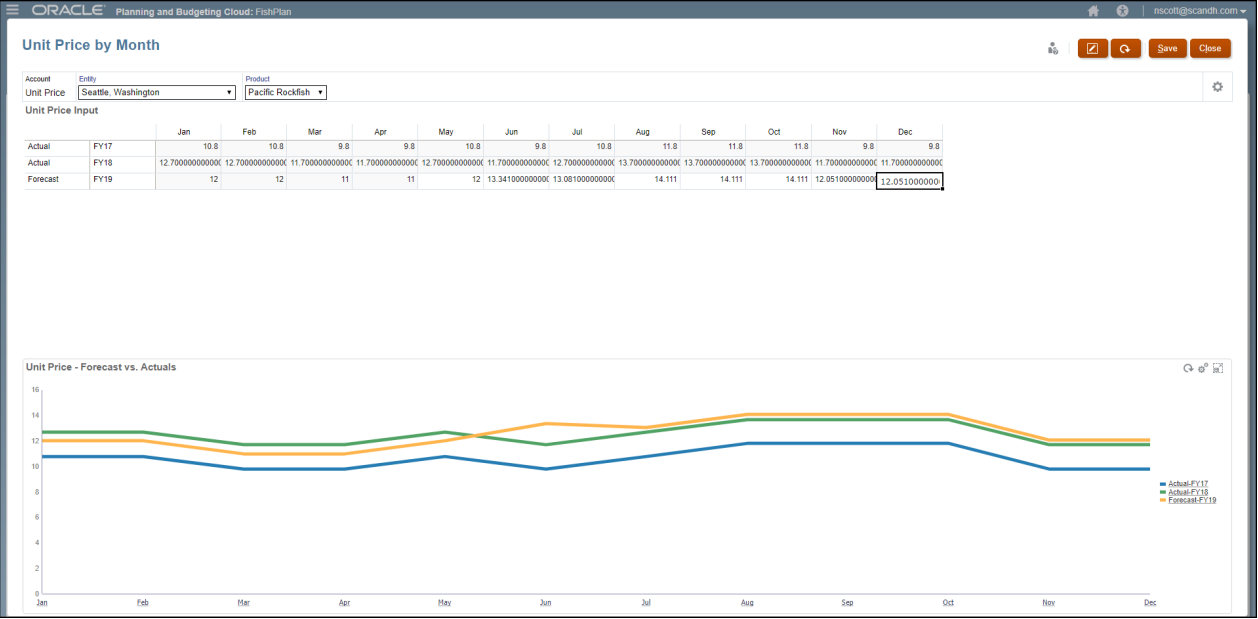
Infolets

Infolets

- Infolets are another reporting feature in PBCS.
- This type of reporting is great for quick, summarized views of data.
- Infolets can be combined with Navigation Flows to create a second home page so users can get a glance of their data in one place.

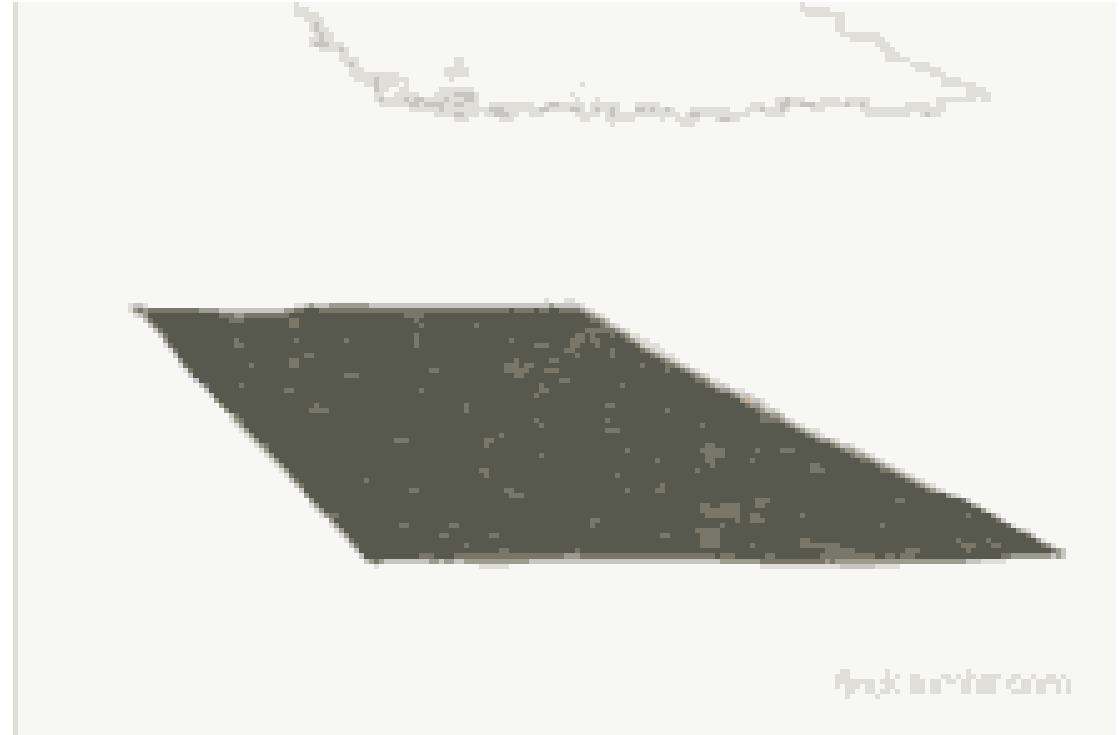


Infolets vs. Dashboards



Wrapping it Up

- Dashboards provide users a chance to tell a story with their data.
- The benefits of dashboards help users make more informed decisions.
- Getting started with dashboards is simple and fun!



Honeymoon:

1. Greece

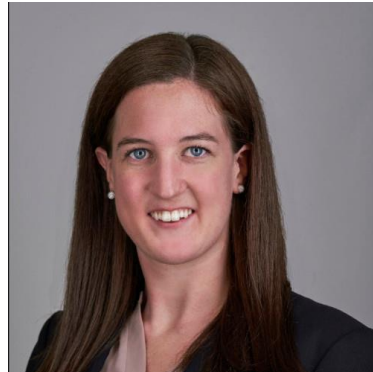


2. Hawaii



Questions?

Let's Catch Up



Katie High

Senior

SC&H Group

✉ chigh@schgroup.com

📞 410-988-1380

Stop By and See Us in the Exhibit Hall!

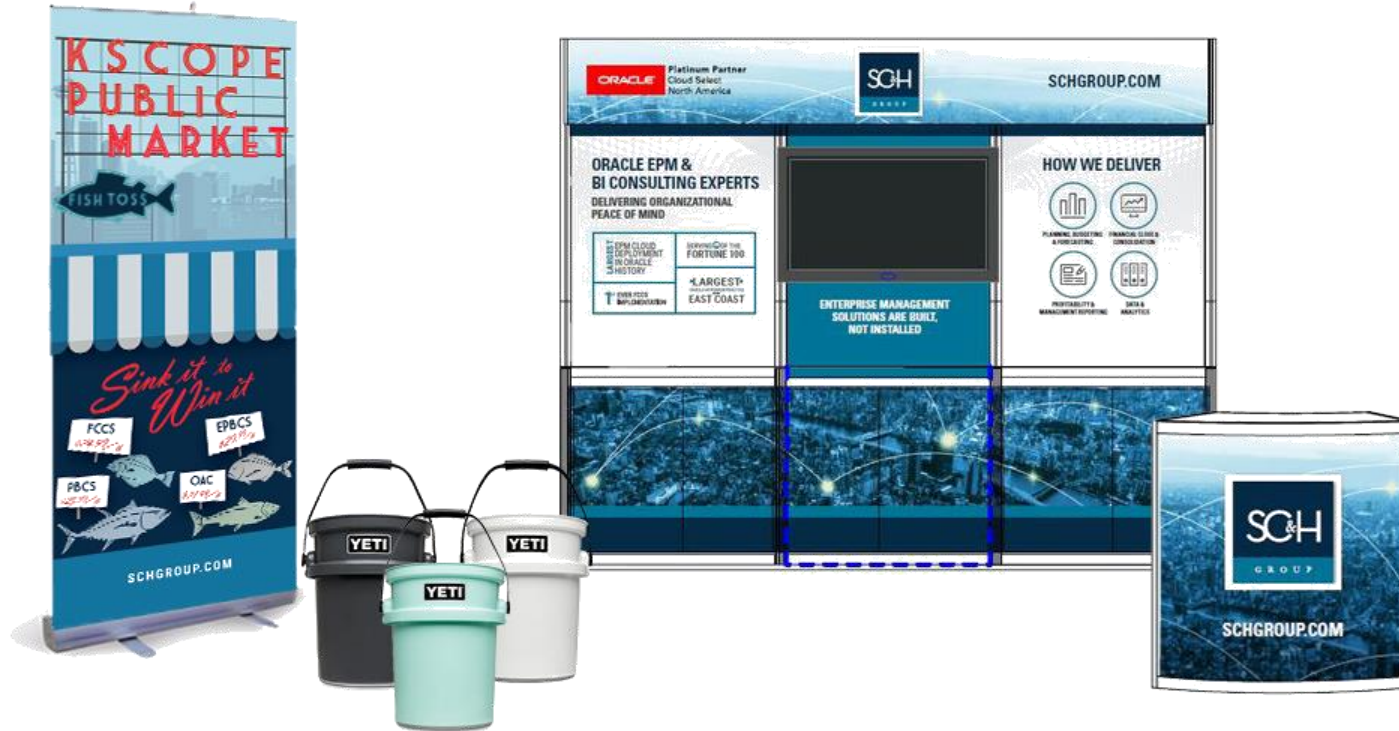
SC&H @ Booth #110

“Live” Fish Toss Contest

Make 3 Shots:

- Win Starbucks Gift Card
- Entered for Chance to Win 1 of 3 Yeti Buckets

Boat Keychains!
Swedish Fish!
Koozies!





I'M SPEAKING AT

ODTUG
Kscope19



SEATTLE, WASHINGTON • JUNE 23-27

www.kscope19.odtug.com

SEATTLE